

WE NEED YOUR HELP!
 This is your opportunity to review the draft concept and provide us with your feedback or ideas

The City of Ballarat has an ongoing program to improve neighbourhood parks. Each year we will design and implement changes to 5 to 10 reserves where the need is greatest. Clover Street Reserve in Wendouree has been identified for upgrade.

Last year, we asked the community about how they used the park and how they would like to see it developed.

What would you like to see changed in the reserve?

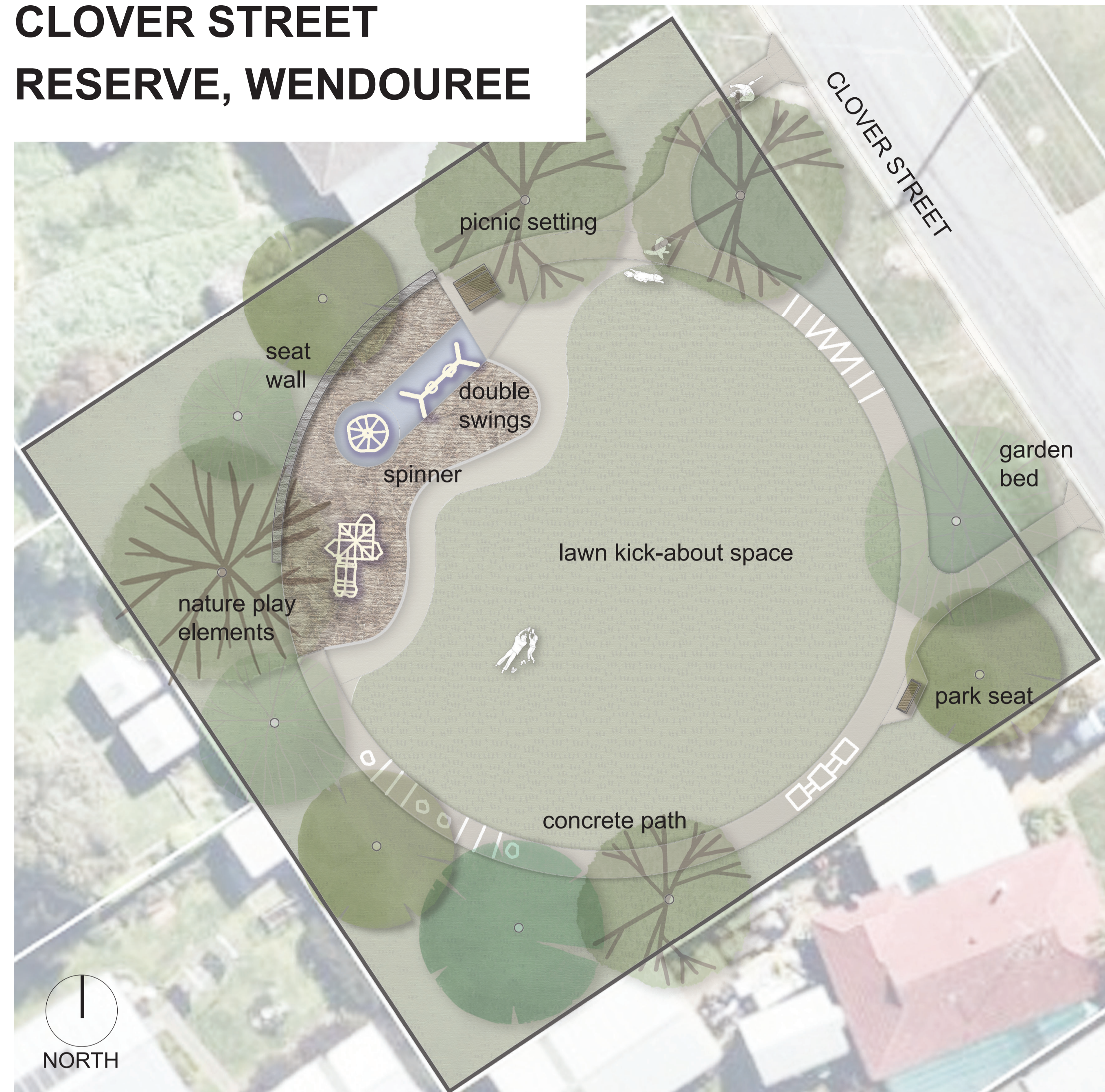
Improvements to the play offerings was the focus of the suggestions for change with respondents requesting monkey bars, slide, swings, climbing frame as well as a shelter and improved drainage.

We have taken the feedback into consideration and created a new park space. We want to know what you think about this proposal?

WHAT IS A NEIGHBOURHOOD PARK?

Neighbourhood parks are the municipality’s smallest open spaces. A neighbourhood park may have a small playspace catering to frequent, short duration visits from those nearby. Being designed for short visits, they typically do not include public toilets or BBQ facilities.

CLOVER STREET RESERVE, WENDOUREE



DRAFT CONCEPT PLAN

KEY FEATURES AT CLOVER STREET RESERVE

- an accessible, all-weather circuit path with colourful linemarkings.
- a picnic setting and park seat, near the play space for supervision and one at the eastern end for those wanting to enjoy the park.
- an updated accessible playspace with new play elements including swings, a spinner and play unit for all ages as well as nature play elements.
- new tree and garden bed plantings with a range of species for shade, colour and habitat.

CURRENT FEATURES

Clover Street Reserve is a 0.18ha park, situated on Clover Street in Wendouree. The park contains a small playspace and mown lawn.

TIME FOR A CHANGE

The playground elements and edging have all reached their end of life and need removal. The small trees which were recently planted which will be relocated within the park



EXISTING CONDITIONS

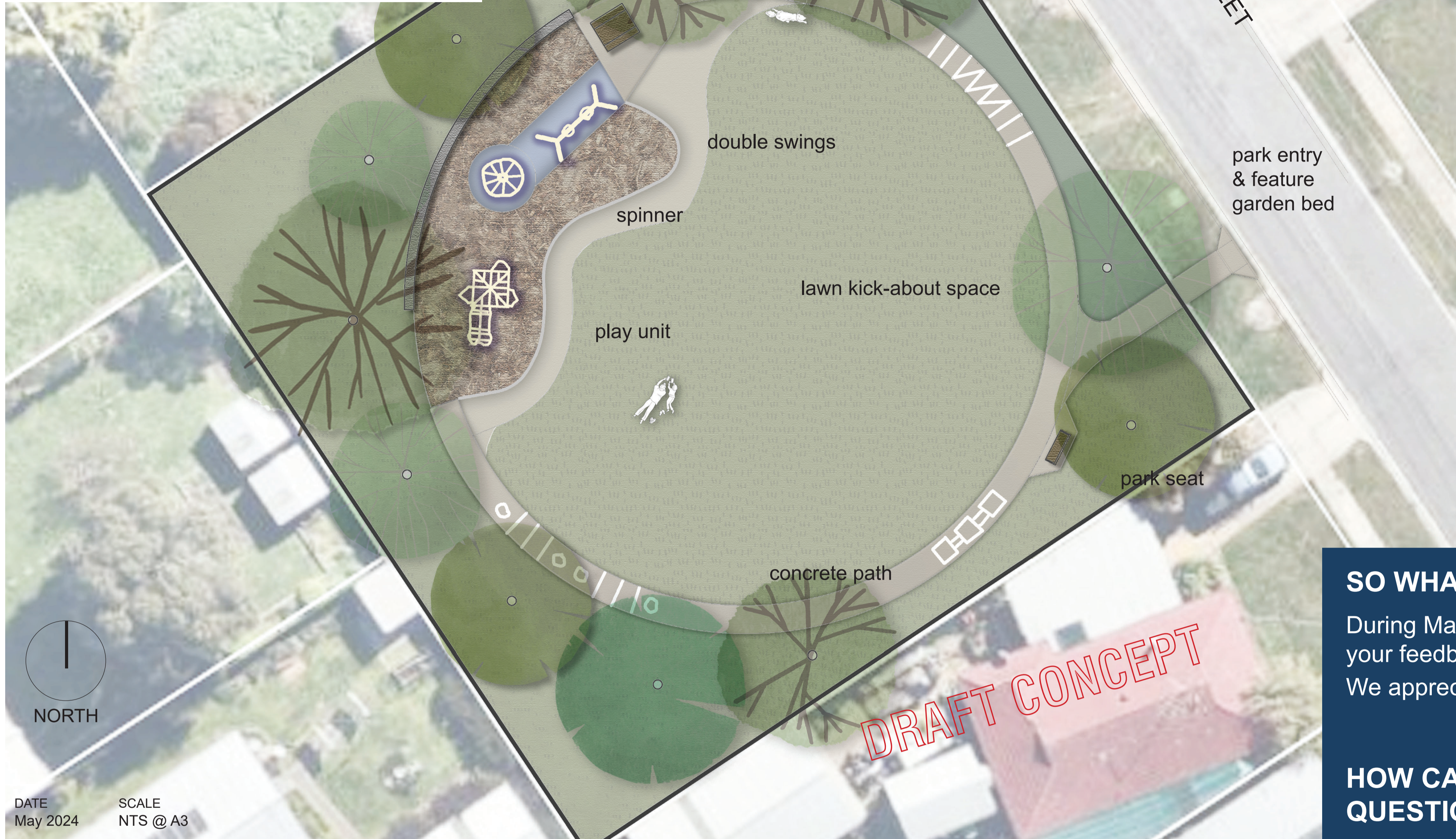
Photo of existing conditions looking into Clover Street Reserve and the existing play equipment - November 2023.

A PARK FOR EVERYONE

- A well designed park offers a range of activities including swinging, climbing, balancing over different materials for children to learn how to move their bodies.
- Parents or carers are given seating options in close proximity to the play space to rest and supervise from.
- The provision of an all-weather path invites the community to move safely through the space and to engage in exercise.
- Additional tree planting and garden beds provide seasonal interest, shade and biodiversity benefits for birds and pollinators.

NEIGHBOURHOOD PARKS PROGRAM

CLOVER STREET RESERVE, WENDOUREE



DATE May 2024 SCALE NTS @ A3

DRAFT CONCEPT PLAN

PRECEDENT IMAGES & IDEAS



play unit



double swing



net spinner

Nature play provides a space with elements like timber logs or large rocks. They offer opportunities for social, imaginative and cognitive play to occur.



nature play elements

PHASES OF ENGAGEMENT



QR CODE



SO WHAT NEXT?

During May we will be asking the community to review and share your feedback. Works are expected to be undertaken in early 2025. We appreciate the time you take to share your feedback with us.

HOW CAN I PROVIDE FEEDBACK OR ASK A QUESTION?

- You can contribute on our MySay page.
- <https://mysay.ballarat.vic.gov.au>
- or follow the QR code above
- citydesign@ballarat.vic.gov.au
- phone (03) 5320 5500.

